

July 20, 2025



New Life
ALLIANCE CHURCH

*Bringing New Life
in Christ to our
Community and World*

We are so glad *You* are here to

Worship with Us

WELCOME!!!

**Sunday School 9am | Breakfast Fellowship 10am
and Worship Service 10:30am**

Children to be dismissed after announcements.

**Parents/Guardians: bring children to the Education Bldg
to sign in, then sign them out right after service.**



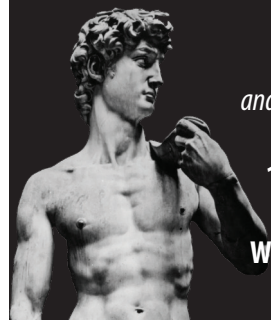
Elders are always available for prayer after the service.

Wednesdays 7am Men's Morning Fellowship

6:30pm NLA Youth Group and Adult Bible Study

Thursdays 7pm Google Meet Prayer Meeting

Historical Events & Biblical Facts...



*the royal line of
KING DAVID
and his reign over Israel
and Judah in
1st CHRONICLES
6:30pm
Wednesday Nights
Fellowship Hall*

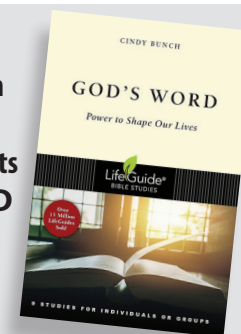
Join Pastor Stan

6:30pm

Wednesday Nights

GOD'S WORD

*Power to Shape
Our Lives*



**Prayer
Meeting**

Email us at nlacoffice@newlifealliance.org
and request inclusion of Google Meet Bible
Studies and prayer chain notifications.



Tithe.ly

YOU To Be

it's the KidMin
Sunday Morning Series

(Not Who TV Tells You To Be)



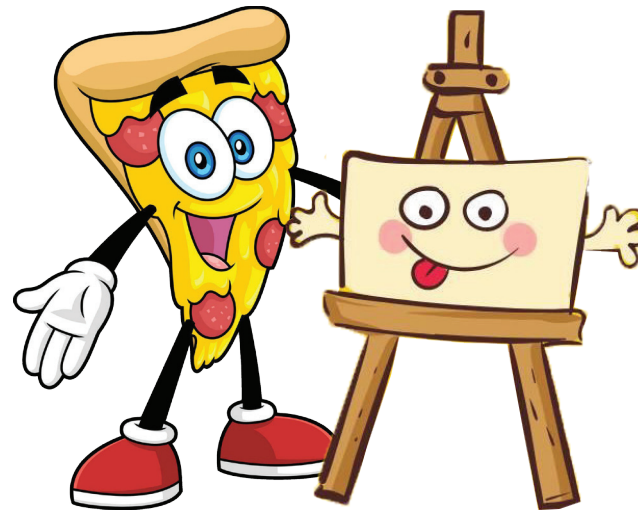
In loving memory of

Joan Wissink

February 1, 1929 - July 5, 2025

Join us here this Saturday at 2pm for her

Celebration of Life



TOGETHER AGAIN!

This Friday night,
please bring family
and friends for a fun
night with Mr. Glen!
Pizza and Paint
starts at 6pm right
here at NLAC.



In The Doghouse:
Matthew McElroy

Please **pray for him** through this week!



PLEASE...
make note
this urgent
and heartfelt
request...



CAMA

RELIEF & DEVELOPMENT

Right now, because of the weight of the relief work that happened over this past year, CAMA's Disaster Relief Fund is \$500,000 short of where it needs to be.

We can't let a lack of funds stop those in need from receiving crucial aid and experiencing Christ's love in the midst of their most desperate time.

CAMA's relief work can't be done without people like you - people who believe in sharing Christ's compassion by coming alongside those who need help getting back on their feet.

Ways to give:
visit cmalliance.org/C-CAMARelief

Credit or Debit over the phone:
(866) 443-8262

Check payable to: "The Alliance"
(write "CAMA disaster relief fund" on the memo line.

Pre-Addressed envelopes provided in the foyer.

OR through your offering here using the envelopes in the foyer.
Mark "other" CAMA - (checks payable to New Life Alliance).



Scriptures S - Study O - Observe A - Apply P - Pray

Today Ephesians 5:1-10

Friday, July 25 Pizza 'n Paint 6pm

Saturday, July 26 Joan Wissink Memorial 2pm

July 27 Ezekiel 37:1-14 *From the Graveyard*

Aug 3 2 Thes 2:1-17 *Stand Firm*

Saturday, Aug 9 Back to School Bash 10:30am

Aug 10 Jude 1:20-25

Aug 17 Hosea 3 *Loving & Lasting*

OneBlood Big Red Bus on campus today

Aug 24 Haggai 1